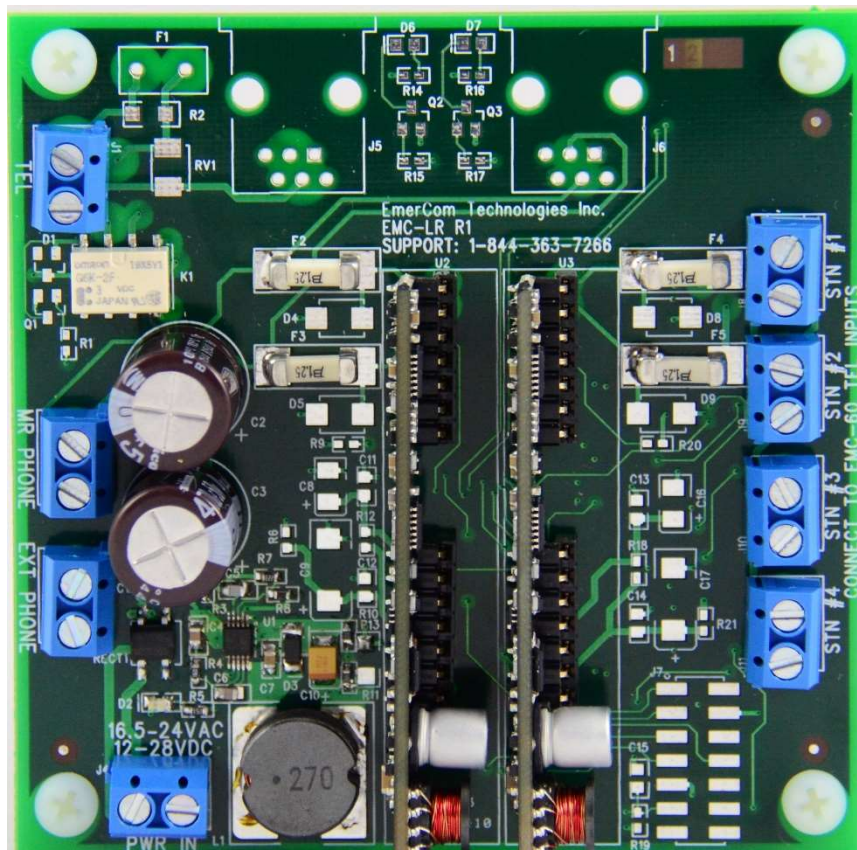




EMC-LR USER GUIDE

Low-Rise Communicator



Quick start guide

1

Fasten back box to wall and run appropriate wiring/conduit.

A Safe LV supply must be available to power EMC-LR (120VAC/16.5VAC Class 2 transformer provided by EmerCom) 16-24VAC; 12-28VDC

2

For each car EMC-60 elevator phone, connect:

- EMC-60 TEL to EMC-LR STN#X
- Set EMC-60 phones to be stations 1, 2, .. 4

3

Connect EMC-LR board:

- Machine room phone to EMC-LR MR PHONE or plug into RJ-11
- Lobby phone to EMC-LR EXT PHONE
- Phone line (central office) to EMC-LR TEL
- Class 2 Transformer/PSU to PWR IN

4

OPERATION

Machine room phone ON-HOOK

- All calls routed off-site to Central Office

Machine room phone OFF-HOOK

- Machine room phone calls to car station phones (overrides if necessary)

Customer Care: Call 1-844-EMERCOM (1-844-363-7266) for assistance.

Contents

About the EMC-LR.....	3
EMC-LR Connections.....	4
Specifications.....	5
Ordering.....	5
Warranty.....	6

About the EMC-LR

Description of Operation:

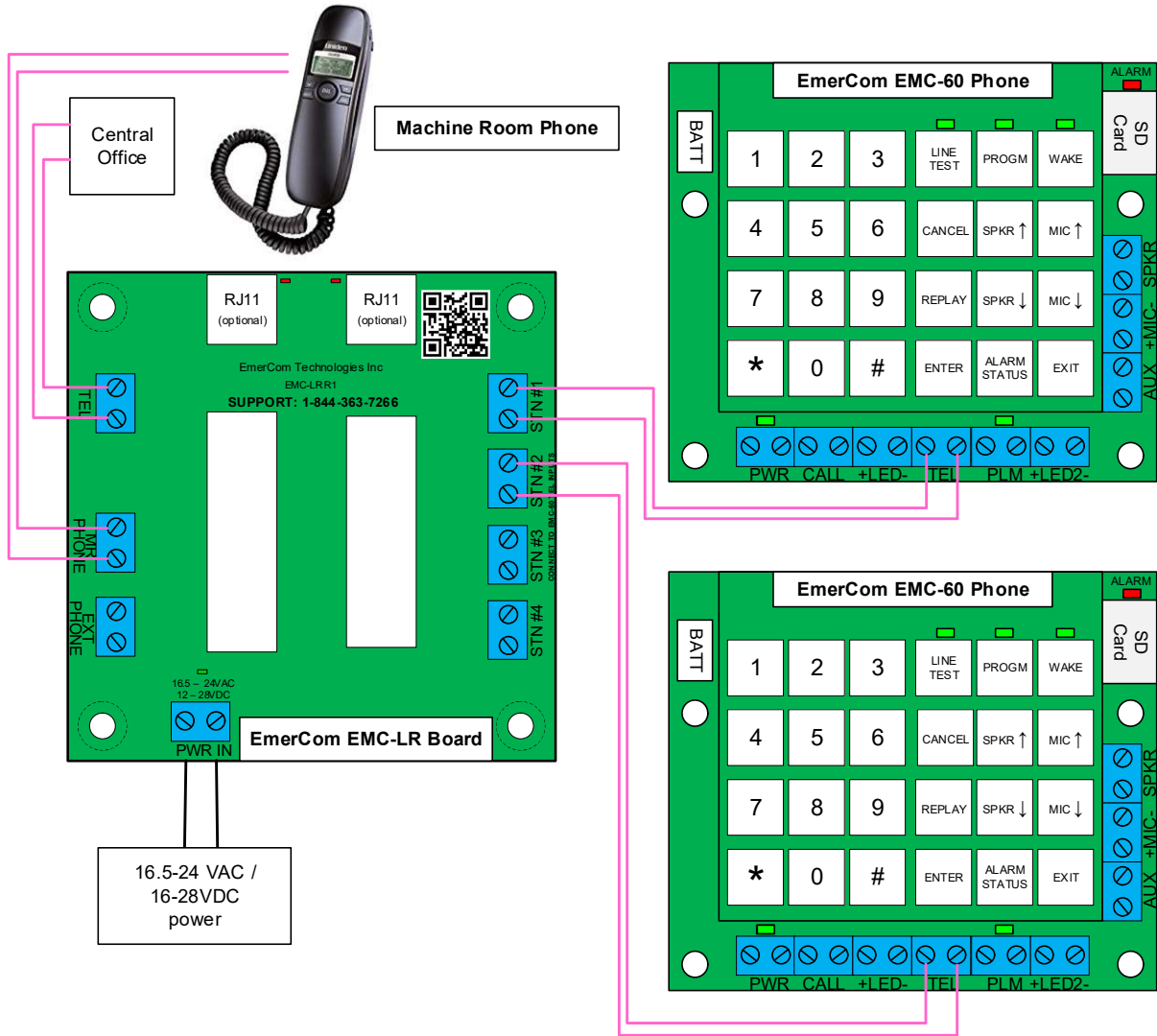
The EmerCom EMC-LR Low Rise Communicator consolidates up to 4 (four) elevator emergency phones onto one PSTN telephone line and enables a machine room phone or other remote handset in the building to call directly into any one of these elevators. If an existing conversation is in progress between a car phone and an off-site location, the EMC-LR overrides and takes over this conversation.

Connections are provided for multiple handsets (maximum 4 in parallel).

Key Features:

- Under normal conditions
 - calls from elevator phones are routed offsite (connected in parallel)
 - any EMC-LR handset can call into any elevator by following the prompts
- If an emergency call is in progress
 - lifting any EMC-LR handset will override the call in progress
 - and if another EMC-60 phone attempts a call the EMC-60 will inform the passengers that another call is in progress and the phone will re-dial automatically while prompting the callers on the call in progress that another call is being attempted
- Connections for 1 plug-in machine room phone and 2 wire-in remote handsets (maximum 4 handsets in parallel)
- 16.5-24VAC; 12-28VDC
- Power status LED for troubleshooting

EMC-LR Connections



Specifications

Phone Line	One shielded pair of communication cable, minimum #26 AWG, with the shield preferably grounded at the controller end of the traveling cable.
Phone Line Requirements	Standard analog loop start voice grade telephone line.
Capacity (number of cab phones)	4
Capacity (number of remote handsets)	1 plug-in machine room handset and 2 wire-in remote handset connectors with max 4 (four) handsets in total
Input Power	16.5 – 24Vac 16 – 28Vdc
Operating Range	0 – 60°C

Ordering

EMC-LR

EMC-LR PCB in an 8"x8"x4" box.

Warranty

SHIPPING AND LIABILITY

Please verify that the shipment is received in good order ASAP.

EmerCom Technologies Inc. warrants parts and labor on all equipment of its own manufacture for a period of 24 months from the date of shipment but cannot be held liable for any loss or damage resulting from causes beyond their reasonable control. Any abuse, vandalism, alteration or misuse of these products for purposes or in a manner other than that for which they were manufactured will void the warranty.

Please return defective products prepaid to your nearest service center after first calling 1-604-589-3899 (or toll-free 1-844-363-7266) for a Return Authorization (RMA) number. Please provide:

- Model number
- Problem or fault description
- Name of the person requesting the RMA, phone number and shipping address

Please reference the RMA number clearly on all packaging and paperwork.

Note: Statistically, more field problems are caused by wiring, connection, power supply or installation issues rather than the devices themselves. Please have your field staff call us from site before concluding that an EmerCom product needs to be returned, to offer you the assistance to resolve the problem most conveniently over the phone.

EmerCom Technologies Inc. shall not be liable for any loss or damage resulting from causes beyond its reasonable control and in no event whatsoever shall we be liable for consequential damages resulting in personal injuries, property damage or economic loss to any party.

Rev: 1p1B