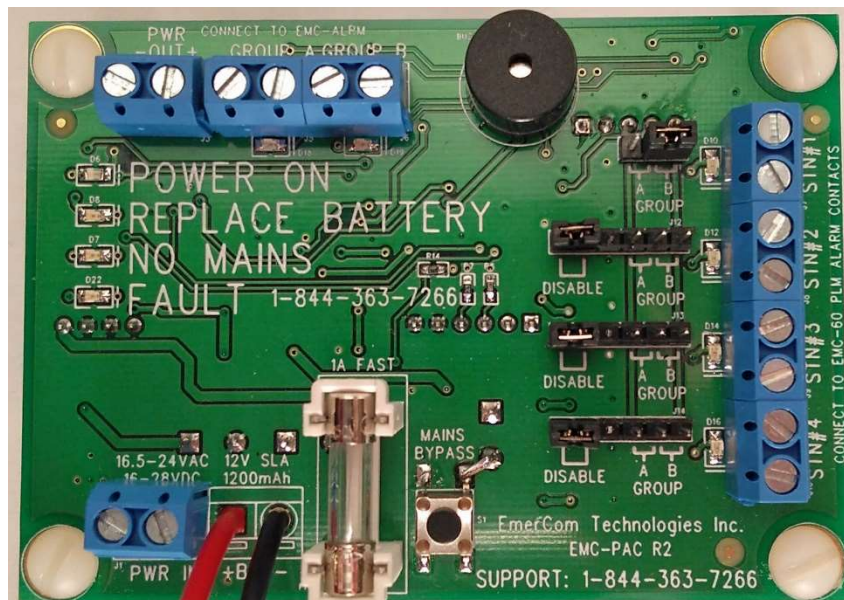




EMC-PAC USER GUIDE

Power and Alarm Consolidator



Quick start guide

□ 1

Connect first station phone line alarm

- STN#1 to PLM on EMC-60 phone

Connect additional stations (as required)

- STN#X to PLM on EMC-60 phon

□ 2

Configure STN#1 group

- Move jumper to GROUP A or GROUP B

Configure additional station's group

- Move jumper to GROUP A or GROUP B or DISABLED

□ 3

Connect alarm board

- GROUP A to PLM IN
- PWR -OUT+ to +12-12VDC-

Connect 2nd alarm board (if required)

- GROUP B to PLM IN
- PWR -OUT+ to +12-12VDC-

□ 4

Connect power

- 16.5VAC to PWR IN
- 12V (from battery) to +BAT

□ 5

Troubleshoot alarms (if any)

- POWER ON for normal operation
- Change battery if REPLACE BATTERY alarm
- No input power detected if NO MAINS alarm
- Refer to troubleshooting in manual if FAULT alarm

Contents

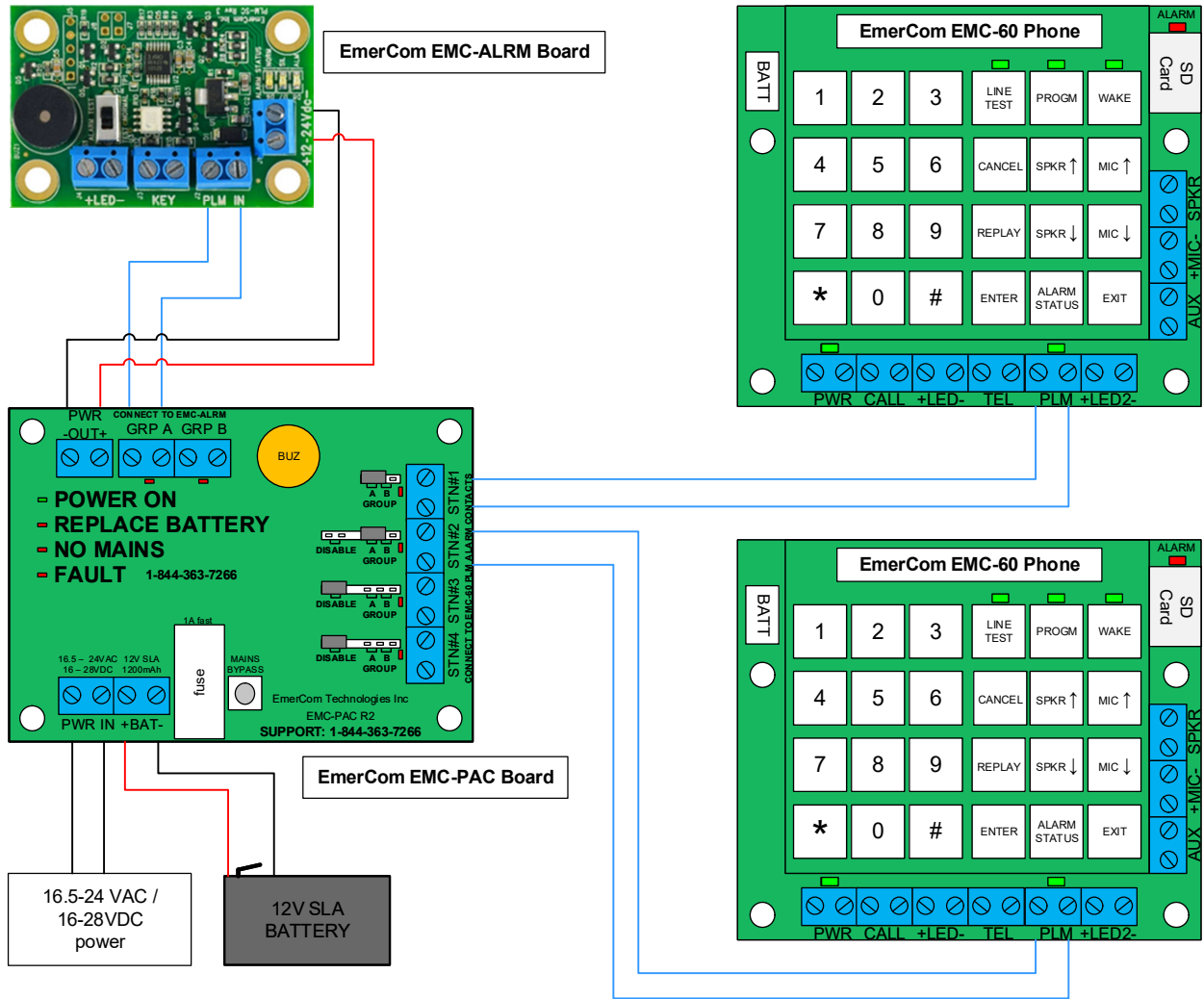
About the EMC-PAC Power & Alarm Consolidator Board.....	3
EMC-PAC, EMC-60 and EMC-ALRM Connections	4
EMC-ALRM and EMC-PAC Low-Rise Layout.....	5
Description of Operation	6
Configuring Groups	6
Troubleshooting.....	7
Dimensions.....	7
Specifications	8
Ordering	8
Warranty	9

About the EMC-PAC Power & Alarm Consolidator Board

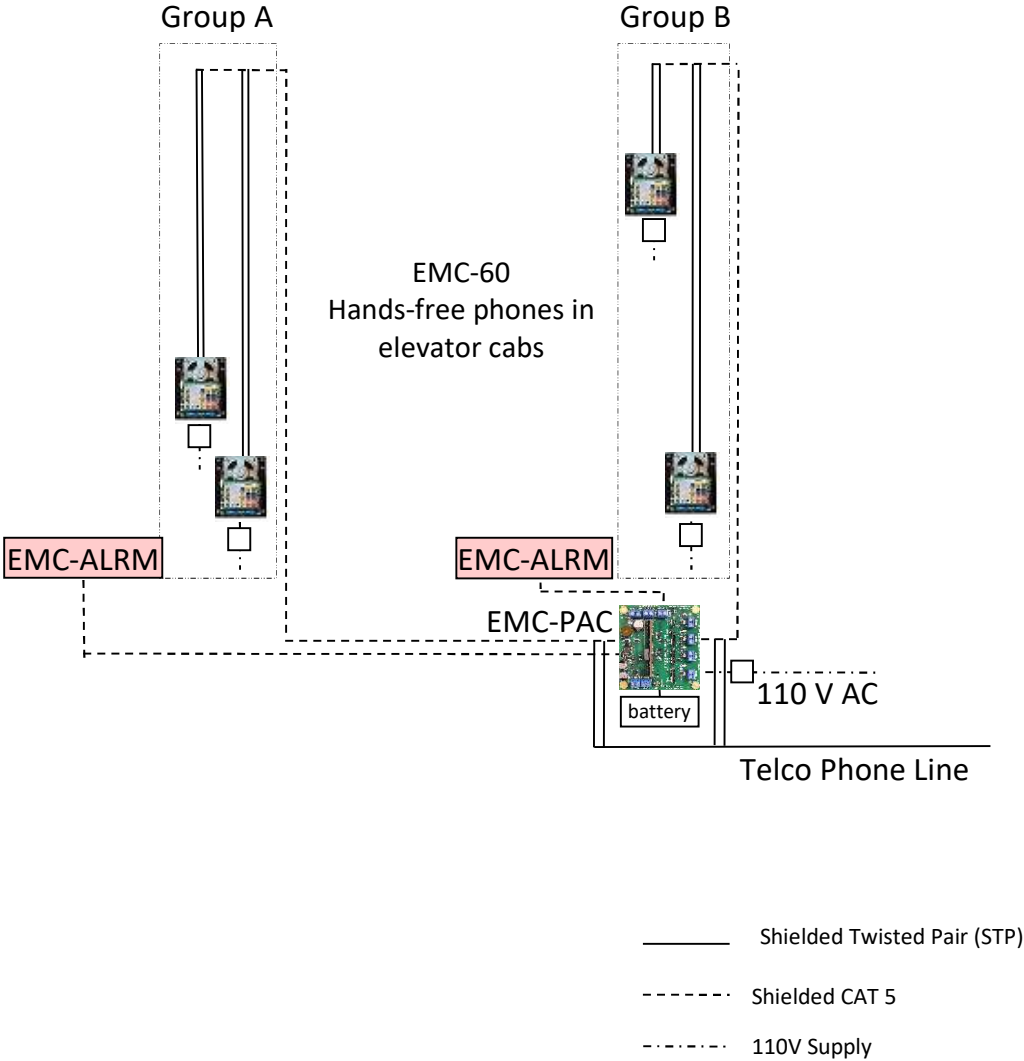
Key Features:

- Uninterruptable power supply (UPS) for up to two EMC-ALRM boards
- Consolidates the phone line alarm outputs from four elevator phones into groups A and/or B
- Four status LEDs to verify normal operation or to aid in troubleshooting
- Audible alarm to alert personnel to replace battery or of a wiring issue
- Fuse protects against battery reversal

EMC-PAC, EMC-60 and EMC-ALRM Connections



EMC-ALRM and EMC-PAC Low-Rise Layout



Description of Operation

The EmerCom Power and Alarm Consolidator (EMC-PAC) board allows for the easy termination of the Phone Line Monitoring (PLM) alarm outputs built into the EmerCom EMC-60 Hands-free Elevator phones. The EMC-PAC board can accept PLM wiring from up to 4 phones and allows the alarms to be combined as one or two groups.

When attached to a 12V SLA battery, the EMC-PAC board provides backup power to 2 EMC-ALRM boards during a power outage.

A green POWER ON LED in the middle of the board quickly informs personal that the board has power and is operational. Whenever the red REPLACE BATTERY, NO MAINS, or FAULT status LEDs illuminate, there exists one or more issues with the wiring or battery. The issue can be quickly identified by reading the name of the status LED or by looking up the problem in the troubleshooting section.

Additional red LEDs exist at each STN and each GROUP terminal to aid the technician with the different conditions. When an LED illuminates red, the corresponding terminal is in an alarm condition. Alarms on the EMC-PAC are based on fail-safe conditions and detect an alarm when the terminals are “open-circuit”.

The EMC-PAC comes equipped with an audible buzzer that emits a short tone whenever the board needs servicing such as battery replacement.

Configuring Groups







STN #1 PLM alarm can only be configured as GROUP A or GROUP B.

STN #2 through STN #4 can be configured as GROUP A, GROUP B, or DISABLE.

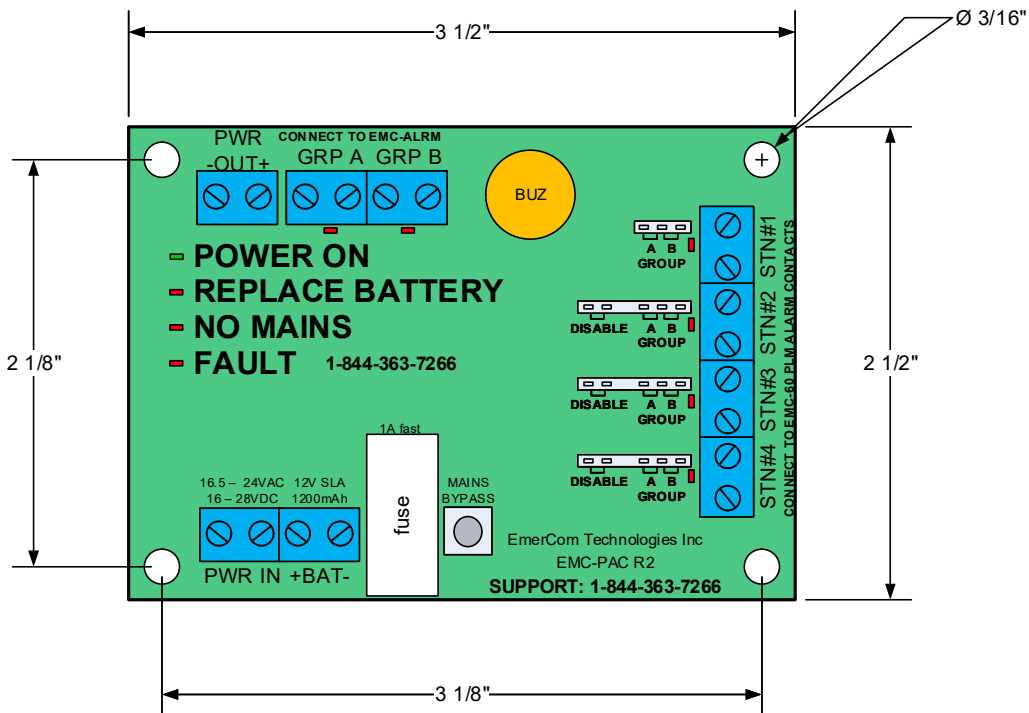
Ensure that the provided shunt is properly attached to the pins as shown below.



Troubleshooting

Name	LED Status	Possible Symptoms
POWER ON	<p>On </p> <p>Off </p> <p>Flashing </p>	<ul style="list-style-type: none"> • Normal operation • Mains and battery not connected • Mains not connected to PWR IN
REPLACE BATTERY + buzzer	<p>On </p>	<ul style="list-style-type: none"> • Replace battery
NO MAINS	<p>Flashing </p>	<ul style="list-style-type: none"> • Mains not connected to PWR IN
FAULT	<p>Flashing </p>	<ul style="list-style-type: none"> • Battery dead; replace battery • Battery fuse blown; replace fuse with 1A fast • Output shorted; remove load on PWR OUT • Contact Support 1-844-363-7266

Dimensions



Specifications

Phone Line Alarm	One shielded pair of communication cable, minimum 24AWG, with the shield preferably grounded at the controller end of the traveling cable.
Output Power	12Vdc typical, 200mA max
Input Power	16.5 – 24Vac 16 – 28Vdc
Battery	Type: Sealed Lead Acid Rated Voltage: 12V Capacity: 1.2AH Terminals: 0.187" spade
Operating Range	0 – 60°C

Ordering

EMC-PAC-XX

Power & Alarm Consolidator Board with a 1.2Ah SLA battery

With options:

XX = blank : no enclosure

XX = BX : 8" x 8" enclosure with 1.2Ah SLA Battery

Warranty

SHIPPING AND LIABILITY

Please verify that the shipment is received in good order ASAP.

EmerCom Technologies Inc. warrants parts and labor on all equipment of its own manufacture for a period of 24 months from the date of shipment but cannot be held liable for any loss or damage resulting from causes beyond their reasonable control. Any abuse, vandalism, alteration or misuse of these products for purposes or in a manner other than that for which they were manufactured will void the warranty.

Please return defective products prepaid to your nearest service center after first calling 1-604-589-3899 (or toll-free 1-844-363-7266) for a Return Authorization (RMA) number. Please provide:

- Model number
- Problem or fault description
- Name of the person requesting the RMA, phone number and shipping address

Please reference the RMA number clearly on all packaging and paperwork.

Note: Statistically, more field problems are caused by wiring, connection, power supply or installation issues rather than the devices themselves. Please have your field staff call us from site before concluding that an EmerCom product needs to be returned, to offer you the assistance to resolve the problem most conveniently over the phone.

EmerCom Technologies Inc. shall not be liable for any loss or damage resulting from causes beyond its reasonable control and in no event whatsoever shall we be liable for consequential damages resulting in personal injuries, property damage or economic loss to any party.

Rev: 1p0c